

Installing and Running SMAP Programs (SMAP Version 6.58a)

Minimum Hardware Requirement

- ✓ Pentium/Athlon with 128 Mb RAM and 580 Kb free memory.
- ✓ Windows 95/98/me/2000/XP system.
- ✓ SVGA monitor.

Installation Procedure

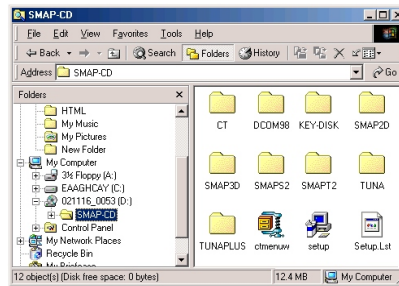
1. Uninstall if there are pre-existing SMAP programs.
To uninstall SMAP programs,
remove following program using Add/Remove in Control Panel:
SMAP
rename or delete following folders if they are existing:
C:\Program Files\Smapi
C:\SMAP
and delete following files if they are existing in Windows or WINNT
directory:
ST6UNST.000, ST6UNST.001, ST6UNST.002, ---
2. To save your valid Activation Code,
rename "C:\SmapiKey" folder to "C:\SmapiKey_Save".

2 Installing and Running SMAP Programs

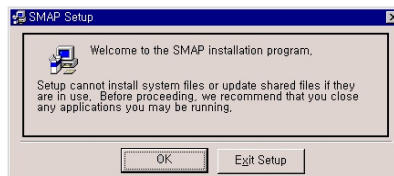
3. **Download SMAP**

Download SMAP-CD.EXE from the Download section of www.ComtecResearch.com and run SMAP-CD.EXE.

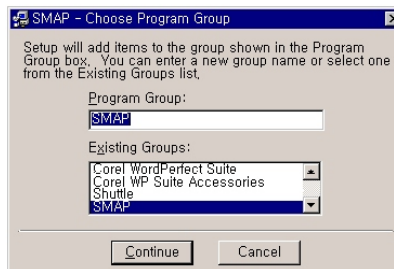
Run Setup.exe and follow the instruction on the screen.



- 4 Click **OK** button to continue installation. It will take about few minutes depending on your system before you see Step 5 screen.



5. Choose the Program Group and click **Continue**.



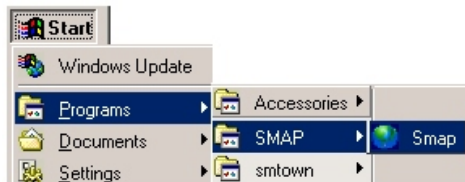
6. Click **OK** button to finish installation.



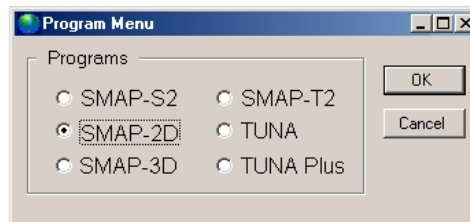
7. To reuse the valid Activation Code, delete "C:\SmappKey" folder and rename "C:\SmappKey_Save" back to "C:\SmappKey".
8. For Windows 2000/XP operating systems, set the maximum size of virtual memory to 4000 MB thru Control Panel ->System->Advanced->Performance Option->Change.
9. For file association of PLOT-3D, run "Plot3D_File_Assoc.exe" in this folder and copy "Shortcut to PLOT3D.exe" on your Desktop.

Running SMAP® Programs

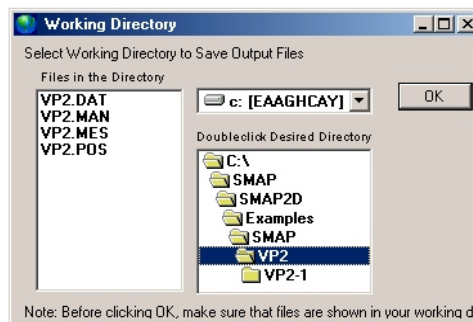
1. Click the Start button, point to Programs, and then click the SMAP.



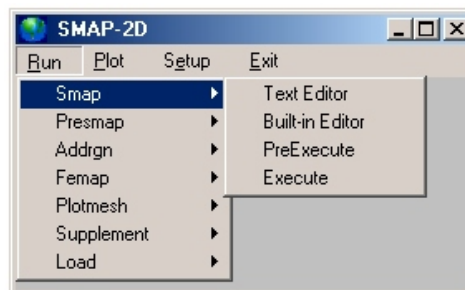
2. Select the program [Ex. SMAP-2D] and then click **OK** button.



3. Click the disk drive, doubleclick the working directory, and then click **Ok** button.
(Note: All your output files will be saved in this working directory)

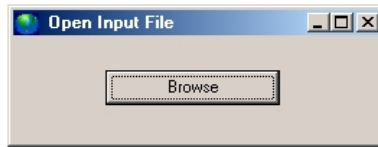


4. Point to **Run** → **Smap** and then click **Execute** to execute the main processing program.

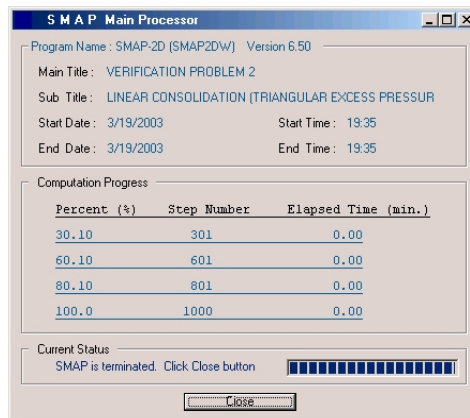


4 Installing and Running SMAP Programs

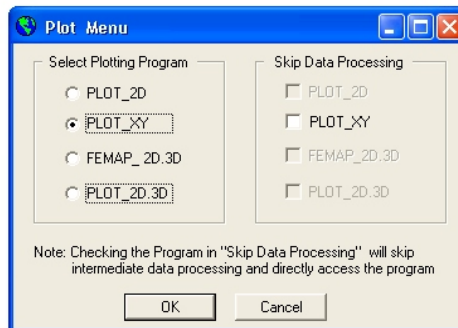
5. Click the Browse button to open input file. (Note: Path should be included in the file name if the input file is not in the working directory. For example, C:\SMAP\SMAP2D\EXAMPLE\SMAP\VP2\VP2.DAT)



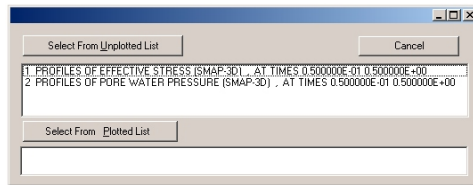
6. Press **Close** Button when calculation is completed.



7. Point to **Plot** menu and then click **Plot Options** to execute the post-processing programs. Select plotting program [Ex. PLOT_XY] and then click **OK** button.



- Click desired plot no. and then click **Select From Unplotted List** button.



- Graphical output will be followed. For detailed description of post-processing programs PLOT_2D.3D and PLOT_XY, refer to Post-Processing Programs.
- Click the Close button in the upper-right corner of the window to exit from the plotting program.
- Click the **Exit** button to exit from SMAP.
- Pre-processing programs of SMAP can be executed by following the similar procedure as described above.